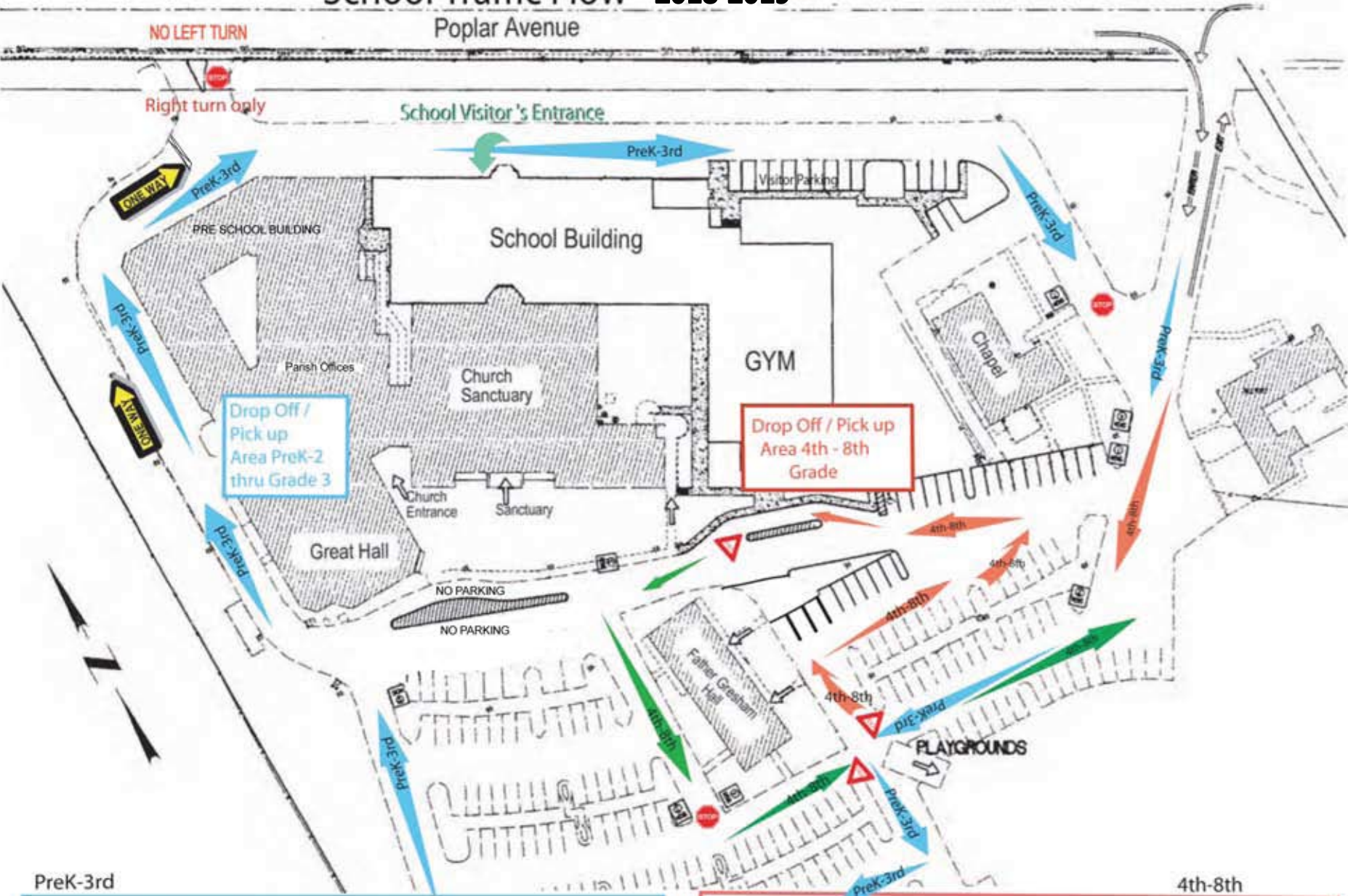


# School Traffic Flow 2018-2019



PreK-3rd

Drop off and Pick Up for Grades PreK-2 through 3rd Grade will enter at traffic light. Continue south to furthest end of island and make right turn. Turn left at stop sign and proceed toward fields, then turn right and continue across the back parking lot. Right turn to Porte-co-chere entrance on west side of Great Hall. Exit right on Poplar at first driveway, or continue east to exit at traffic light, observing stop sign at Chapel.

4th-8th

Drop off and Pick Up for Grades 4,5, 6,7 & 8 will enter at traffic light. Continue south to furthest end of island and make right turn. Yield at end of island. Make a right turn and then a left turn with drop-off/pick-up at gym entrance. Exit left on west side of Father Gresham Hall, observing stop at corner. Turn LEFT and proceed to exit. Please drop-off/pick-up older siblings first then merge back into drop lane for PreK - 3rd at stop sign on the south side of Father Gresham Hall.